

Daily Market Report



Tuesday, 21 June 2011

BETA SECURITIES SA

Member of the Athens Stock Exchange

	Price	Chg: %	30 days %	YTD %*
GR				
Athens General	1,229	-2.0%	-5.2%	-13.0%
FTSE / ASE 20	551	-2.5%	-4.7%	-17.0%
FTSE / ASE Mid 40	1,158	-2.6%	-14.0%	-22.7%
US				
Dow Jones	12,080	0.6%	-4.2%	4.3%
Nasdaq	2,630	0.5%	-6.9%	-0.9%
S&P 500	1,278	0.5%	-4.9%	1.6%
Europe				
FTSE-100	5,693	-0.4%	-4.4%	-3.5%
DAX-30	7,150	-0.2%	-2.8%	3.4%
CAC-40	3,800	-0.6%	-5.7%	-0.1%
Eurostoxx 50	2,508	-0.2%	-4.3%	-3.0%
Eurostoxx 50E	2,748	-0.8%	-4.9%	-1.6%
Asia				
NIKKEI-225	9,354	0.0%	-2.8%	-8.6%
HANGSENG	21,600	-0.4%	-6.8%	-6.2%
year end 2010*				

Market Statistics

Market Cap (in bil. €)	50.4
Market Turnover (in mil. €)	56.6
Advances	53
Declines	87
Unchanged	46
Total Movers	186

Futures Delivery	Settlmnt	Prem/Di sc	Open Interest	Traded Volume
FTSE / ASE 20				
September 2011	547.22	-0.61%	27,764	9,830
December 2011

Short Selling (SS)	Short Selling Trade Volume	% in total volume	Buy to dese trade volume	% in total volume
MPB	106,214	7.67		
Coca Cola	35,883	23.62		
HTO	89,734	15.91		
Jumbo	12,268	9.63		
Alpha Bank	86,000		5,000	0.56

Ex Dividend

Titan	24-Jun
HellenicTelecom	28-Jun
Ellaktor	28-Jun
J&P	01-Jul
HellenicPetrol	4-Jul

Market Comment

Market ended 2% lower yesterday, following last Friday's upward relief, at 1,229 despite early gains of 0.8%. Anemic turnover at 56.6m euros. Banks suffered heavy losses, ending at 919.85 units, down 4.26%. Hellenic Postbank dropped by 6.73% at €2.77, while Bank of Cyprus and Eurobank lost more than 5%. Alpha Bank, Marfin Popular Bank and National Bank declined by 4.82%, 4.76% and 3.79%.

10YR bond spread against German bunds 14.38 ppts. Euro U.S. \$1.43

EU/IMF technical mission in Athens to verify Greek implementation of bailout terms.

Gov

George Papandreou asks for a Vote of Confidence. Lawmakers will vote on the motion at midnight on June 21.

Macro

Greece central-government budget deficit widens in first 5 months of 2011 to 10.3B euro (\$14.7B) from 9.1B euro

T bills

Greece will auction 3-month T-bills to raise €1.25bn on June 21st. Previous interest rate was 4.06%.

Corporate

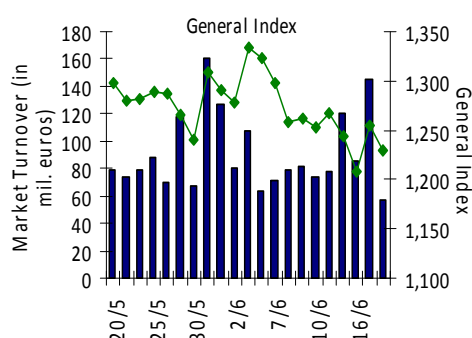
Intracom/Started talks with a "major telecommunications equipment vendor" to become a shareholder in the company. Also Intracom said it extended its put option right for the sale of a 49 percent stake in its telecom unit to JSC Concern Sitronics to June 30, 2012.

Intralot / Intralot Ohio, Received a two year extension. Also Ohio Cumulative fiscal year sales through May are up \$105 million or 4.6 percent higher than last fiscal year.

ATE / Trades ex rights to share capital increase

Alpha Bank / OGM (10am) Vote for share capital increase + bond issue

PPC / unions strike action against stake sale continues for 2nd day





BETA SECURITIES: 29 Alexandras Avenue, Athens, Greece, Post Code 11473
Phone: +30 210 64 78 900 / E mail: info@beta.gr / web site: www.beta.gr

EQUITY RESEARCH:

Elena Chatzistefanou: (+30) 210 64 78 904
Eleni Zombanakis: (+30) 210 64 78 905

INSTITUTIONAL SALES:

Petros Papathanasiou (+30) 210 64 78 764
Vangelis Charatsis (+30) 210 64 78 920
George Karadimas (+30) 210 64 78 766
George Zois (ACA) (+30) 2106478 760
Konstantinos Makris (+30) 210 64 78 983

DERIVATIVES SALES:

John Spirtos: (+30) 210 64 78 988
Michalis Tzavlas (+30) 210 64 78 758
Nickolaos Zaharopoulos (+30) 210 64 78 946

Disclaimer

The above report was issued by BETA SECURITIES SA for informative purposes and only for the use of its intended recipients. The above report is not intended for distribution or reproduction, in whole or in part without the permission of BETA SECURITIES. The material included in the report is based on public information believed to be reliable, yet, BETA SECURITIES cannot guarantee in any way its correctness or accuracy. The report is published only for information purposes and is not to be considered as an offer to buy or sell securities or financial instruments. BETA SECURITIES does not accept any liability whatsoever for any direct or consequential loss arising from any use of this document or its contents. BETA SECURITIES may have or had, for their own account, positions related to the material discussed above. For any additional information, regarding the material of the current report, please contact BETA SECURITIES.